

Norwich Office - Sales and Lettings

2-6 Ber Street, Norwich, Norfolk, NR1 3EJ

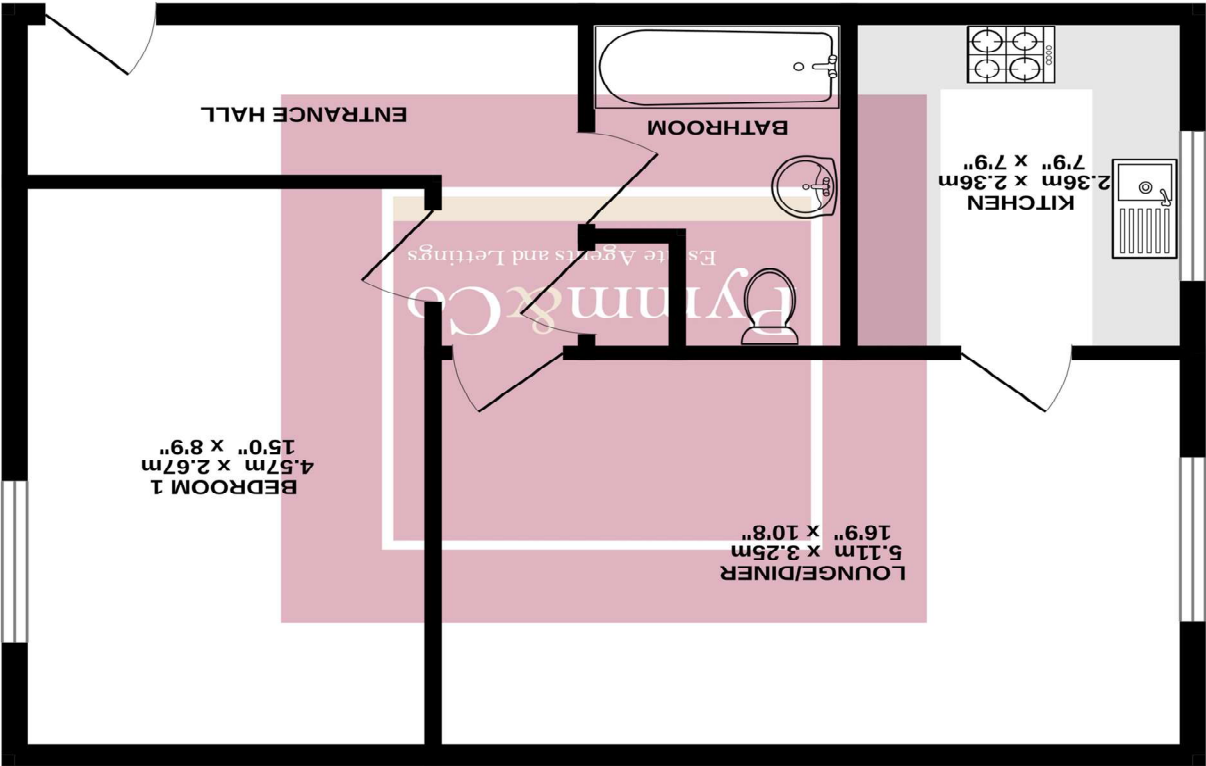
Tel: 01603 305805

homes@pymmand.co.uk lettings@pymmand.co.uk

This floor plan is for illustrative purposes only and is not drawn to scale. Measurements, floor areas, openings and orientations are approximate. They should not be relied upon for any purpose and do not form any part of an agreement. No liability is taken for any error or mis-statement. All parties must rely on their own inspections.

 Made with Metropix ©2025

TOTAL FLOOR AREA : 50.1 sq.m. (539 sq.ft.) approx.



GROUND FLOOR
50.1 sq.m. (539 sq.ft.) approx.



Offers in Excess of
£125,000

2 Dalrymple Way, Norwich, Norfolk, NR6 6TP

Call 01603 305805 | www.pymmand.co.uk

BROADLAND
CONSULTANTS LIMITED



Looking for
a mortgage?

Independent Mortgage
& Financial Advice.

Our expert mortgage advisors are able to guide you through the whole mortgage process, to help you select and arrange the right product for you. Let us also make your life easier, by arranging the selected mortgage on your behalf. This includes First Time Buyer, Home Mover, Re-mortgage and Buy to Let services.

Broadland Consultants Limited Is An Appointed Representative Of Sanlam Partnerships Limited Which Is Authorised And Regulated By The Financial Conduct Authority.

FCA No 521208

* Your home may be repossessed if you do not keep up the repayments on your mortgage.

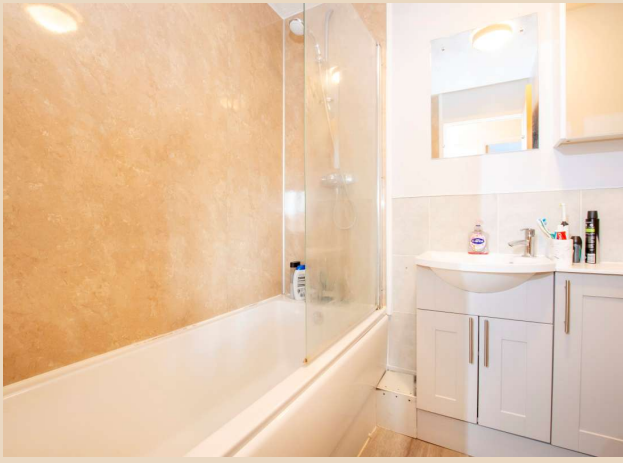


- Well presented first floor apartment
- Excellent location close to local amenities
- Good size entrance hall with storage cupboard
- Spacious lounge diner with adjoining fitted kitchen
- Double bedroom to the rear
- Well appointed bathroom
- Gas central heating and UPVC double glazing
- Communal gardens
- One allocated parking space within the residence car park
- Would make an excellent first time purchase
- Offered with No Onward Chain

If you are a First Time Buyer looking for your first step onto the property ladder, look no further than this extremely well presented first floor apartment. Situated on the edge of a sought after development, the property offers well planned accommodation including a communal entrance, a generous private hallway with a storage cupboard, a spacious 16'9" lounge/diner with an adjoining fitted kitchen, a 15' double bedroom, and a well appointed bathroom with a shower over the bath. The apartment benefits from UPVC double glazing and gas radiator central heating. Outside, you will find a well maintained communal gardens and one allocated off road parking space within the residents' car park. Offered with No Onward Chain, this property is ideal for a First Time Buyer and early viewing is strongly recommended. Call today to arrange your appointment.

Location

Located North of the City centre of Norwich, Dalrymple Way offers a peaceful residential enclave within easy reach of urban amenities. This desirable location provides residents with the best of both worlds: the tranquility of suburban living combined with the convenience of City amenities. It benefits from its proximity to Norwich City centre, allowing residents to enjoy a wide range of shopping, dining, and entertainment options within a short distance. Nature enthusiasts will appreciate the nearby green spaces, including parks and recreational areas, perfect for leisurely walks, picnics, and outdoor activities. The scenic surroundings offer a peaceful retreat from the hustle and bustle of City life, providing residents with opportunities to relax and unwind. Commuting is a breeze for residents thanks to its convenient location near major transportation routes and public transport links. Whether you are traveling by car or using public transportation, getting around the City and beyond is quick and easy. Overall, the area offers the perfect blend of suburban tranquility, urban convenience, and community spirit, making it a highly desirable location for individuals and families alike.



Lettings & Property Management

Are you looking at this property as a buy to let investment?

If you would like any help regarding the letting and management of this or any other property, our lettings department are always happy to help.

Please call 01603 305805

Please note that we have not tested any apparatus, equipment, fixtures, fittings or services, and so cannot verify they are in working order and are fit for purpose. Furthermore our measurements are for an indication only and should not be taken as fact. Solicitors should confirm moveable items described in the sales particulars are, in fact, included in the sale, since circumstances do change during marketing or negotiations.

Call 01603 305805 | www.pymmand.co.uk